



NPDC-1 Polyclonal Antibody

| | |
|----------------------------------|--|
| Catalog No | YP-Ab-12775 |
| Isotype | IgG |
| Reactivity | Human;Mouse;Rat |
| Applications | WB;ELISA |
| Gene Name | NPDC1 |
| Protein Name | Neural proliferation differentiation and control protein 1 |
| Immunogen | The antiserum was produced against synthesized peptide derived from human NPDC1. AA range:189-238 |
| Specificity | NPDC-1 Polyclonal Antibody detects endogenous levels of NPDC-1 protein. |
| Formulation | Liquid in PBS containing 50% glycerol, 0.5% BSA and 0.02% sodium azide. |
| Source | Polyclonal, Rabbit,IgG |
| Purification | The antibody was affinity-purified from rabbit antiserum by affinity-chromatography using epitope-specific immunogen. |
| Dilution | Western Blot: 1/500 - 1/2000. ELISA: 1/20000. Not yet tested in other applications. |
| Concentration | 1 mg/ml |
| Purity | ≥90% |
| Storage Stability | -20°C/1 year |
| Synonyms | NPDC1; Neural proliferation differentiation and control protein 1; NPDC-1 |
| Observed Band | 35kD |
| Cell Pathway | Membrane ; Single-pass membrane protein . |
| Tissue Specificity | Strongly expressed in adult brain; especially in hippocampus, frontal lobe and temporal lobe. |
| Function | function:Suppresses oncogenic transformation in neural and non-neural cells and down-regulates neural cell proliferation. Might be involved in transcriptional regulation.,similarity:Belongs to the NPDC1/cab-1 family.,tissue specificity:Strongly expressed in adult brain; especially in hippocampus, frontal lobe and temporal lobe., |
| Background | function:Suppresses oncogenic transformation in neural and non-neural cells and down-regulates neural cell proliferation. Might be involved in transcriptional regulation.,similarity:Belongs to the NPDC1/cab-1 family.,tissue specificity:Strongly expressed in adult brain; especially in hippocampus, frontal lobe and temporal lobe., |
| matters needing attention | Avoid repeated freezing and thawing! |

**Usage suggestions**

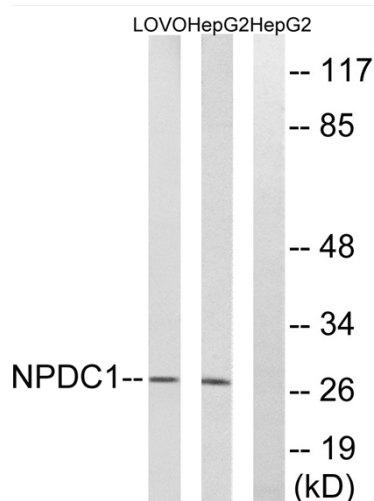
This product can be used in immunological reaction related experiments. For more information, please consult technical personnel.



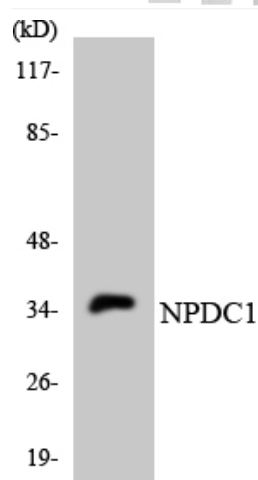
Products Images



Western Blot analysis of various cells using NPDC-1 Polyclonal Antibody



Western blot analysis of lysates from HepG2 and LOVO cells, using NPDC1 Antibody. The lane on the right is blocked with the synthesized peptide.



Western blot analysis of the lysates from K562 cells using NPDC1 antibody.